

# TESSA TERRACE

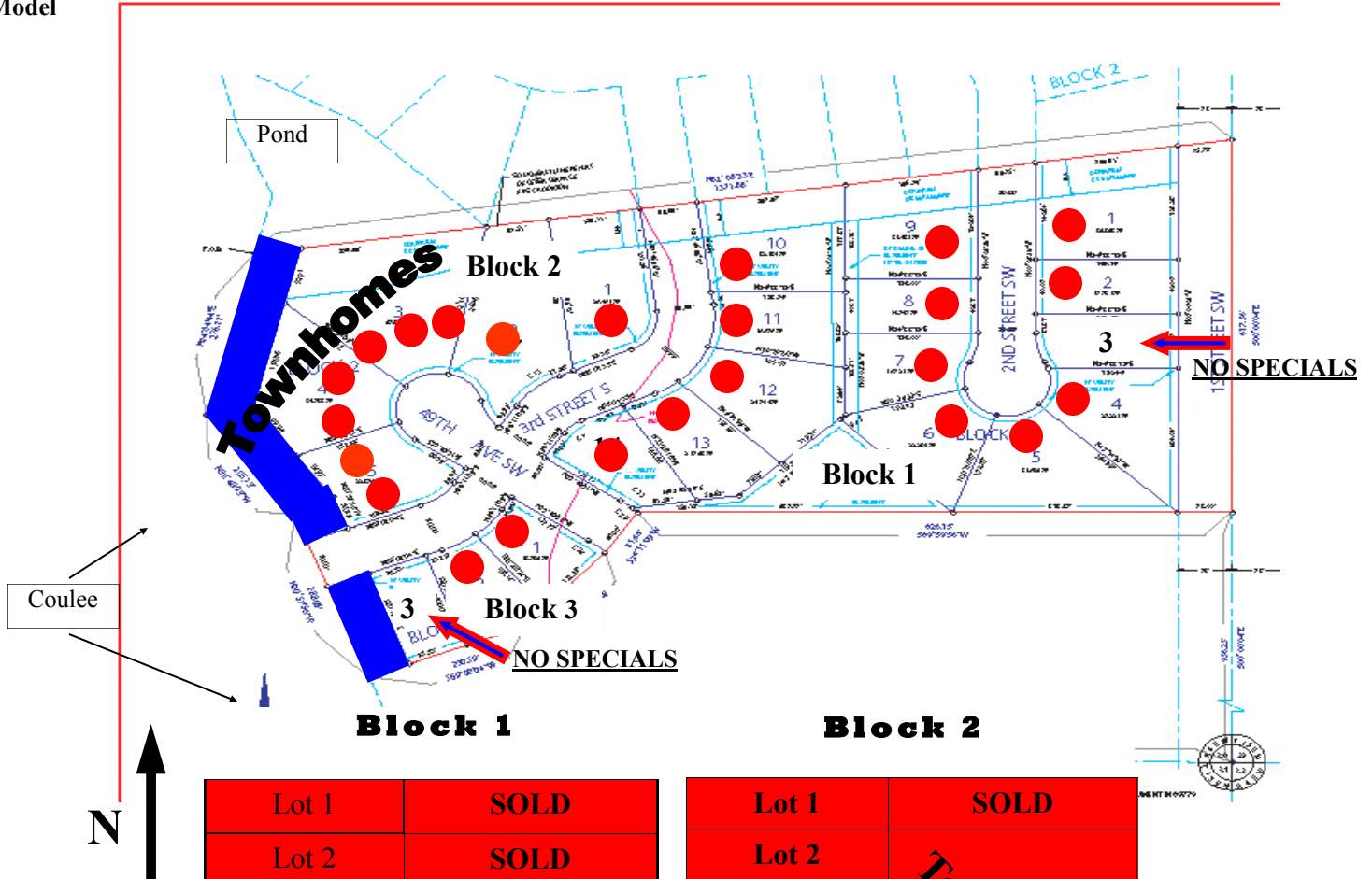
## 2ND ADDITION

### MOORHEAD, MN

3-19-2018

NOTE PRICE INCREASE

- SOLD
- Contractor Lot
- Model



Block	Lot	Status
Block 1	Lot 1	SOLD
	Lot 2	SOLD
	Lot 3	\$126,518 SPUN = \$0
	Lot 4	SOLD
	Lot 5	SOLD
	Lot 6	SOLD
	Lot 7	SOLD
	Lot 8	SOLD
	Lot 9	SOLD
	Lot 10	SOLD
	Lot 11	SOLD
	Lot 12	SOLD
	Lot 13	SOLD
	Lot 14	SOLD

Block	Lot	Status
Block 2	Lot 1	SOLD
	Lot 2	<i>Townhomes</i>
	Lot 3	
	Lot 4	
	Lot 5	

Block	Lot	Status
Block 3	Lot 1	SOLD
	Lot 2	SOLD
	Lot 3	\$126,499 SPUN=\$0

Purchaser responsible for special and general taxes of record payable in year of sale of thereafter.

- ◆ Neighborhood Association Membership Required (\$200/year) - due July 15th
- ◆ Architectural Control Plan Submission Required Prior to Construction—2 Sets w/ Elevation
- ◆ General & Specials taxes due and payable in 2018 paid by purchaser
- ◆ **Check for Updated Pricing**
- ◆ \$295 Mailbox Fee
- ◆ **EDIT NOTICE!** Lot availability & prices may have been altered by someone not under the direction of R.S. Carey Land Co. Please verify these prices and availability with R. S. Carey Land Co. before making a decision.

Call **R. Scott Carey** for more information 218-979-6099 or 218-233-3630

scott@rscareyland.com

R. S. Carey Land Company

1506 Main Ave, Suite 205

Moorhead, MN 56560

www.rscareyland.com