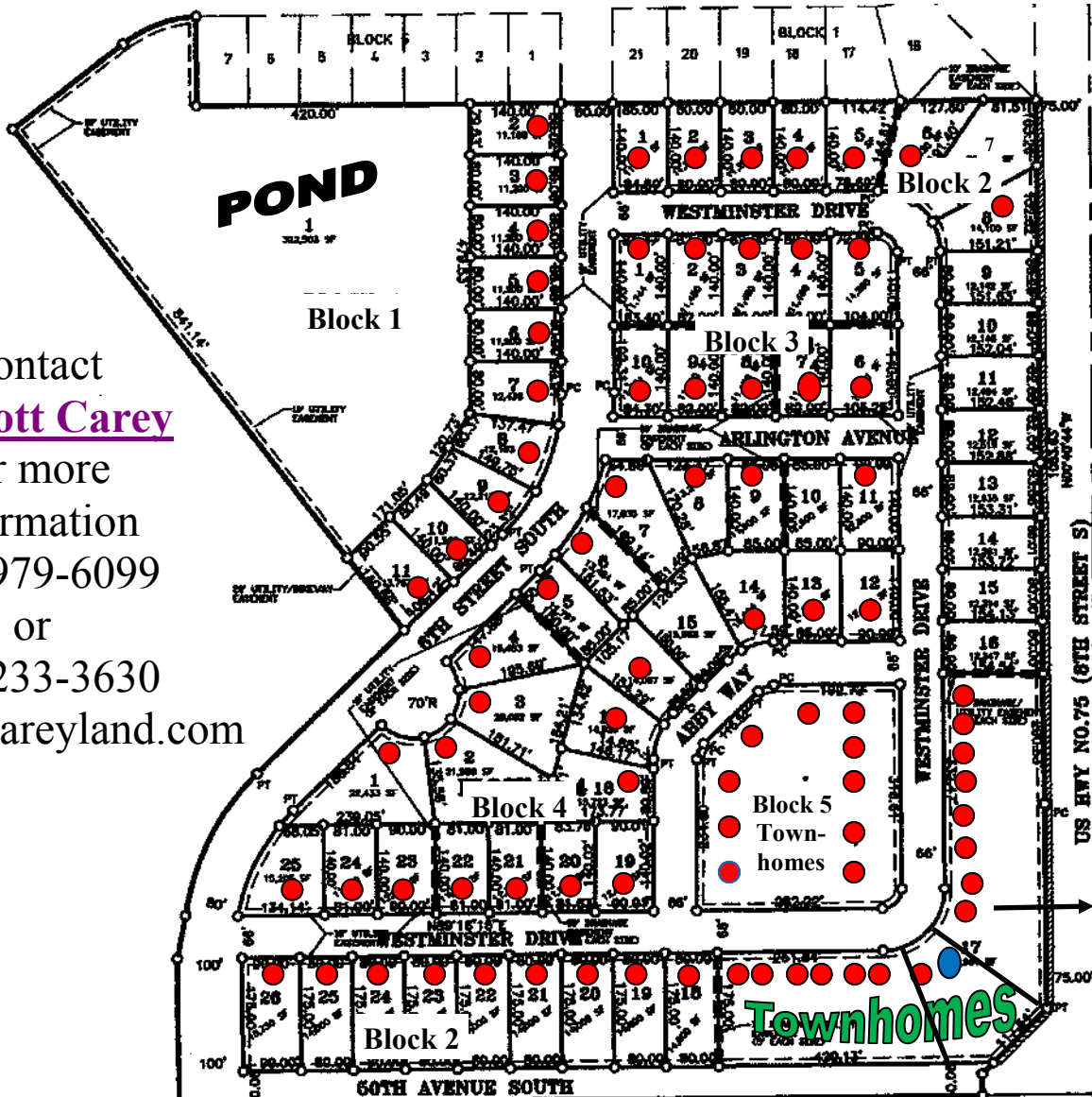


Hampton Place 2nd Addition

10-08-2018

NOTE PRICE INCREASE



Contact
R. Scott Carey
for more
information
218-979-6099
or
218-233-3630
scott@rscareyland.com

BLOCK 1		BLOCK 2		BLOCK 3		BLOCK 4	
Lot 1	POND	Lot 8	SOLD	Lot 1	SOLD	Lot 9	SOLD
Lot 2	SOLD	Lot 9	\$58,436	Lot 2	SOLD	Lot 10	\$74,092
Lot 3	SOLD	Lot 10	\$58,432	Lot 3	SOLD	Lot 11	SOLD
Lot 4	SOLD	Lot 11	\$58,452	Lot 4	SOLD	Lot 12	SOLD
Lot 5	SOLD	Lot 12	\$58,480	Lot 5	SOLD	Lot 13	SOLD
Lot 6	SOLD	Lot 13	\$58,480	Lot 6	SOLD	Lot 14	SOLD
Lot 7	SOLD	Lot 14	\$58,442	Lot 7	SOLD	Lot 15	\$78,136
Lot 8	SOLD	Lot 15	\$58,444	Lot 8	SOLD	Lot 16	SOLD
Lot 9	SOLD	Lot 16	\$58,444	Lot 9	SOLD	Lot 17	SOLD
Lot 10	SOLD	Lot 17	TOWNHOMES	Lot 10	SOLD	Lot 18	SOLD
BLOCK 2		Lot 18	SOLD	BLOCK 4		Lot 19	SOLD
		Lot 19	SOLD	Lot 1	SOLD	Lot 20	SOLD
Lot 1	SOLD	Lot 20	SOLD	Lot 2	SOLD	Lot 21	SOLD
Lot 2	SOLD	Lot 21	SOLD	Lot 3	SOLD	Lot 22	SOLD
Lot 3	SOLD	Lot 22	SOLD	Lot 4	SOLD	Lot 23	SOLD
Lot 4	SOLD	Lot 23	SOLD	Lot 5	SOLD	Lot 24	SOLD
Lot 5	SOLD	Lot 24	SOLD	Lot 6	SOLD	Lot 25	SOLD
Lot 6	SOLD	Lot 25	SOLD	Lot 7	SOLD	BLOCK 5	
Lot 7	\$77,829	Lot 26	SOLD	Lot 8	SOLD	SOLD!	

- SOLD
- CONTRACTOR
- MODEL - CALL FOR DETAILS!

•Architectural Control Plan required with 2 sets of plans, elevation, and plat.

•General taxes & special taxes due in 2019 paid by purchaser.

•Prices subject to change without notice.

•\$295.00 Mailbox Fee

•Developer approved height of foundation.

• **EDIT NOTICE!** Lot availability & prices may have been altered by someone not under the direction of R.S. Carey Land Co. Please verify these prices and availability with R. S. Carey Land Co. before making a decision.

OFFICE:
1506 Main Ave.
Suite 205
Moorhead, MN 56560