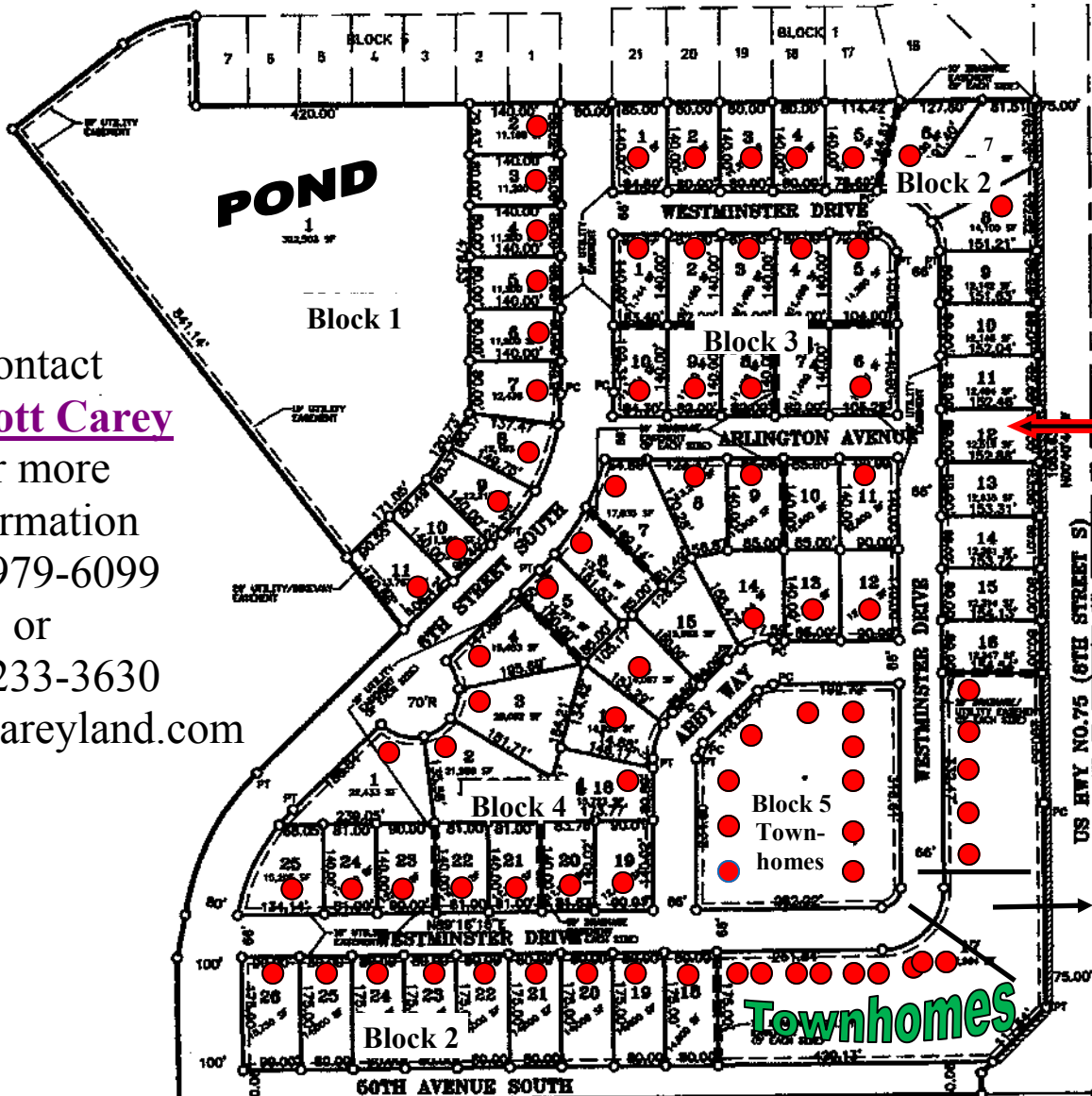


Hampton Place 2nd Addition

1-4-2018

NOTE PRICE INCREASE



Contact
R. Scott Carey
for more
information
218-979-6099
or
218-233-3630
scott@rscareyland.com

BLOCK 1		BLOCK 2		BLOCK 3		BLOCK 4	
Lot 1	POND	Lot 8	SOLD	Lot 1	SOLD	Lot 9	SOLD
Lot 2	SOLD	Lot 9	\$55,080	Lot 2	SOLD	Lot 10	\$70,228
Lot 3	SOLD	Lot 10	\$55,078	Lot 3	SOLD	Lot 11	SOLD
Lot 4	SOLD	Lot 11	\$55,078	Lot 4	SOLD	Lot 12	SOLD
Lot 5	SOLD	Lot 12	\$55,098 \$0 SPUN	Lot 5	SOLD	Lot 13	SOLD
Lot 6	SOLD	Lot 13	\$55,102	Lot 6	SOLD	Lot 14	SOLD
Lot 7	SOLD	Lot 14	\$55,080	Lot 7	\$70,128	Lot 15	\$74,430
Lot 8	SOLD	Lot 15	\$55,082	Lot 8	SOLD	Lot 16	SOLD
Lot 9	SOLD	Lot 16	\$55,082	Lot 9	SOLD	Lot 17	SOLD
Lot 10	SOLD	Lot 17	TOWNHOMES	Lot 10	SOLD	Lot 18	SOLD
BLOCK 2		Lot 18	SOLD	BLOCK 4		Lot 19	SOLD
Lot 1	SOLD	Lot 19	SOLD	Lot 1	SOLD	Lot 20	SOLD
Lot 2	SOLD	Lot 20	SOLD	Lot 2	SOLD	Lot 21	SOLD
Lot 3	SOLD	Lot 21	SOLD	Lot 3	SOLD	Lot 22	SOLD
Lot 4	SOLD	Lot 22	SOLD	Lot 4	SOLD	Lot 23	SOLD
Lot 5	SOLD	Lot 23	SOLD	Lot 5	SOLD	Lot 24	SOLD
Lot 6	SOLD	Lot 24	SOLD	Lot 6	SOLD	Lot 25	SOLD
Lot 7	\$74,277	Lot 25	SOLD	Lot 7	SOLD	BLOCK 5	
Lot 8	SOLD	Lot 26	SOLD	Lot 8	SOLD	CONTRACTOR OWNED CALL FOR DETAILS!	

- SOLD
- CONTRACTOR
- MODEL - CALL FOR DETAILS!

- Architectural Control Plan required with 2 sets of plans, elevation, and plat.
- General taxes & special taxes due in 2018 paid by purchaser.
- Prices subject to change without notice.
- \$295.00 Mailbox Fee
- Developer approved height of foundation.
- **EDIT NOTICE!** Lot availability & prices may have been altered by someone not under the direction of R.S. Carey Land Co. Please verify these prices and availability with R. S. Carey Land Co. before making a decision.

OFFICE:
1506 Main Ave.
Suite 205
Moorhead, MN 56560